

Snowmobile Bridge Guide Modular Type





www.lessardwelding.com

Your complete guide to...

Snowmobile Bridges – Modular Type

✓ *Certified Design & Capacity*



Our snowmobile bridge design is certified by a bridge engineer for an AASHTO H20-44 loading. The capacity of our snowmobile bridge is a 10 ton load limit or 20 000 lbs.

✓ *Durability - IMPORTANT*



Lessard Bridges are designed to handle the certified load capacity as well as withstand the heavy duty operations they will face for years to come. **Our bridge structure is designed with strategic steel reinforcements ensuring a stronger bridge and a steel deck that will last considerably longer than our competitors.** Unlike other bridges, **our pre-welded 8" x 8" pockets spaced according to code (every 6' 3")** allow our bridges to be used in uncontrolled traffic areas.

✓ *Design & Size*



Our snowmobile bridge consists of two 6' 0" wide bridge sections bolted together side by side, once installed, the total running surface is 12 ft. wide. This type of bridge is available in 20 ft., 30 ft., 40 ft. and 50 ft. lengths.



✓ *Low Profile*



This type of bridge is considered a low profile bridge. The site preparation to accommodate this type of bridge is easier and more cost effective.

Bridge	20 ft.	30 ft.	40 ft.	50 ft.
Height	16"	16"	20"	25"



www.lessardwelding.com

Your complete guide to...

Snowmobile Bridges – Modular Type

✓ Reinforced girders – Mandatory by the OMNR



Each bridge section or module is constructed of three girders for a total of six girders per bridge. The inside of the girders are reinforced with cross members (diaphragms). The diaphragms prevent the steel girders from twisting or bending laterally outward. Without this cross bracing, the ability of the bridge to safely carry design loads may be comprised, this is especially true of older structures that have been damaged in use or have started to corrode.

✓ Pulling and lifting lugs



Pulling lugs (left) are pre-welded to each end of each section and lifting lugs (right) are pre-welded into the surface of the bridge sections. Cover caps are provided for the lifting lugs. **These are extremely handy for effectively maneuvering the bridge sections into place.**



✓ Seal Plates

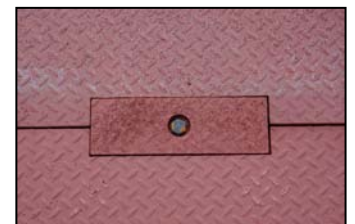


Two seal plates are provided, one for each end of the bridge. They prevent the soil or back fill from escaping in between the two sections. Field installation is required.

✓ Tie Down Access Points



Tie down access points are "cut outs" in the surface of the decking to allow installers to bolt the two bridge sections together. Again, cover plates are provided to ensure the opening is well covered and that the deck surface is level and flush.





www.lessardwelding.com

Your complete guide to...

Snowmobile Bridges – Modular Type

✓ **Steel Decking**

The design and surface of our 3/8" steel checker plate decking offers many benefits and exceeds standards.



Reinforced – Important design feature

Our 3/8" checker plate is supported by cross members every 12" right across the length of the bridge. The reinforcing prevents the decking from warping, deforming and deflecting. Without the reinforcing, the warped decking will rust and corrode much more quickly, eventually weakening the surface and rendering the bridge unsafe. Costly repairs, complete deck replacement or even complete bridge replacement may be in order.

Environmentally friendly and flush steel decking



more smoothly.

A well thought out deck design ensures that a smooth and flush surface runs from one section to the other, offering a safer surface to work and walk on. Grader and plow operators will certainly appreciate this design as winter grading operations will run much



Anti-slip Surface

An anti-slip product is applied to the surface to help prevent slips and falls from happening while working or walking across our bridges.

✓ **Guide Rail Pockets**

Pocket Size and Spacing (as per code – Mandatory by the OMNR)



Our guide rail pockets consist of 8" x 8" x 12" deep hollow structural steel tubing **pre-welded at every 6' 3" (as required)** to the outer sides of the bridge. This 8" size pocket meets MNR's requirements and allows for heavy duty timber posts to be inserted offering a much stronger guide rail.





www.lessardwelding.com

Your complete guide to...

Snowmobile Bridges – Modular Type

✓ *Option - Tapered or Square Ends*



Tapered Ends



Square Ends

✓ *Serial Number*



Each bridge is assigned an individual serial number for easy tracking and record keeping. Accurate records are a requirement of the OMNR Crown Land Bridge Management Guidelines – 2008.

✓ *Quality Control*



ISO 9001
QMI-SAI Global
001723

Lessard Welding is certified to CSA Standard W47.1 in Division 2 by the Canadian Welding Bureau and operates a Quality Management System which complies with the requirements of the ISO 9001:2008 standards.



www.lessardwelding.com

Your complete guide to...

Snowmobile Bridges – Modular Type

✓ **Installation Procedure**



An animated installation video is available on our website at www.lessardwelding.com. The snowmobile bridge installation is the same as our CL-625 Modular Type Bridge installation.



The process is quite simple:

1. Section 1 (identified on the section) is put in place.
2. Section 2 (identified on the section) is put into place beside section 1 using tie down guides (see picture above).
3. Bolts are inserted through the access points from top of bridge.
4. Cover plates are installed on top of access points and voilà!

✓ **Record Keeping**

Lessard Welding maintains a detailed bridge information database of all the bridges sold therefore we can offer existing bridge customers up to date information about their purchased bridges.



Letter of confirmation and other documents

Lessard Welding issues a letter of confirmation for each bridge for proper record keeping as required by the OMNR Crown Land Bridge Management Guidelines - 2008. Our letter specifies information in regards to the bridge as well as drawing information.

Along with the letter of confirmation, we also provide our customers with a copy of the structural notes and a copy of the engineer's stamps both from the original fabrication drawing.

✓ **For more information**

Natalie Lessard
4590 Regional Road 15
Chelmsford, ON P0M 1L0

Tel: 705-855-3480
Fax: 705-855-5586
Toll Free: 888-234-3687
E-mail: natalie@lessardwelding.com
Website: www.lessardwelding.com